

Building connections that last™



Sharpe® Series 66

High Purity Tube Three-Piece
Ball Valve Datasheet



High Purity Tube Three-Piece Ball Valve Sharpe® Series 66



Design and Features:

Body Material

316L Stainless Steel

Tube Full Port Design (TFP)

Tube full port maintains unrestricted flow of media.

Three-Piece Design

In-line serviceable swing out center section allows easy access to internal valve components without disturbing alignment of tubing.

Floating Ball Design

Precision engineered and machined solid stainless steel ball with relief hole in the stem slot prevents build-up of cavity pressure while the valve is open.

Stem Design

Live-loaded, bottom entry, blowout proof stem featuring packing that extends valve cycle life over conventional ball valves and is best choice for actuation.

Stem seals are live-loaded using Belleville springs to provide consistent sealing forces, reducing or eliminating the need for frequent seal adjustment.

ISO 5211 Integral Mounting Pad

Ideal for actuation.

Centering lip feature assures precise alignment of bracket, stem and coupler.

Actuators may be retrofitted on existing Sharpe® Series 66 without disruption of line integrity.

Allows for secondary containment unit to be added when necessary.

Tongue and Groove Design

Fully encapsulated body seals, allowing ends to be welded in-line, without time consuming and labor intensive disassembly.

Design compensates for bolt expansion and reduces the chance of external leakage.

Helps prevent seal ruptures in high pressure, cryogenic or steam applications.

Variety of End Combinations

End connections available include; Clamp End (CE), Short Butt Weld Tube (BE) and Butt Weld Extensions (BTE) for orbital welders.

Encapsulated Body Bolts

Heavy duty stainless steel bolting is protected from outside environment assuring valve integrity.

Ideal for wash-downs.

Lockable Handle

All Sharpe® Series 66 valves are supplied with lever or pipe handles and are designed to permit locking the valve in either the open or closed position.

Traceability

Body and end piece castings are marked with heat codes providing traceability to the chemical analysis and material test reports performed at the foundry. CMTR's (Certified Material Test Reports) are available upon request.

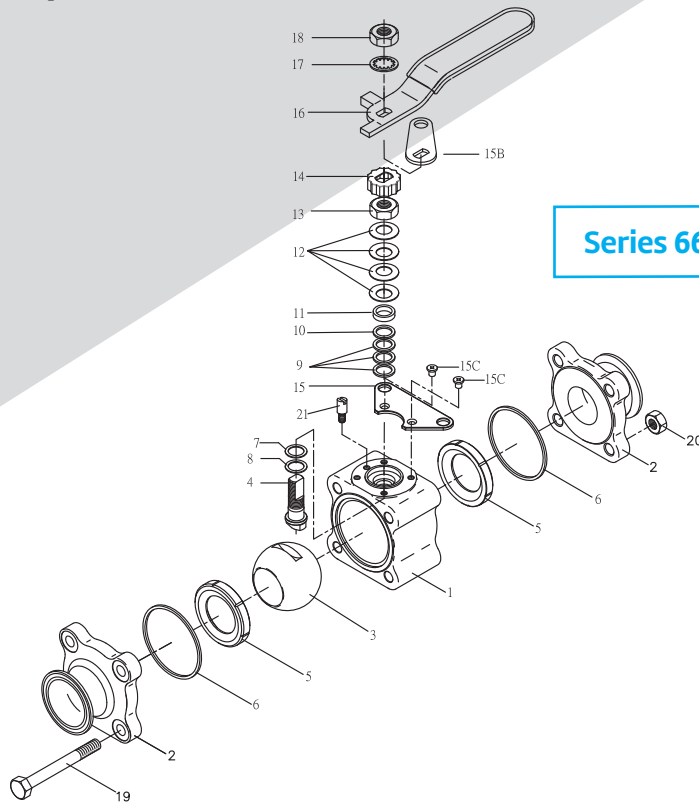


asc-es.com

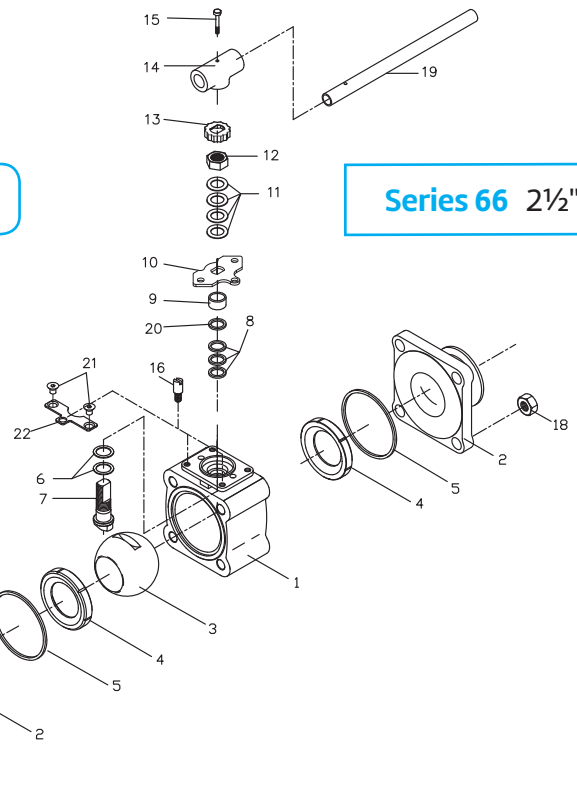
Building connections that last™



High Purity Tube Three-Piece Ball Valve Sharpe® Series 66



Series 66 1/2" – 2"



Series 66 2 1/2"

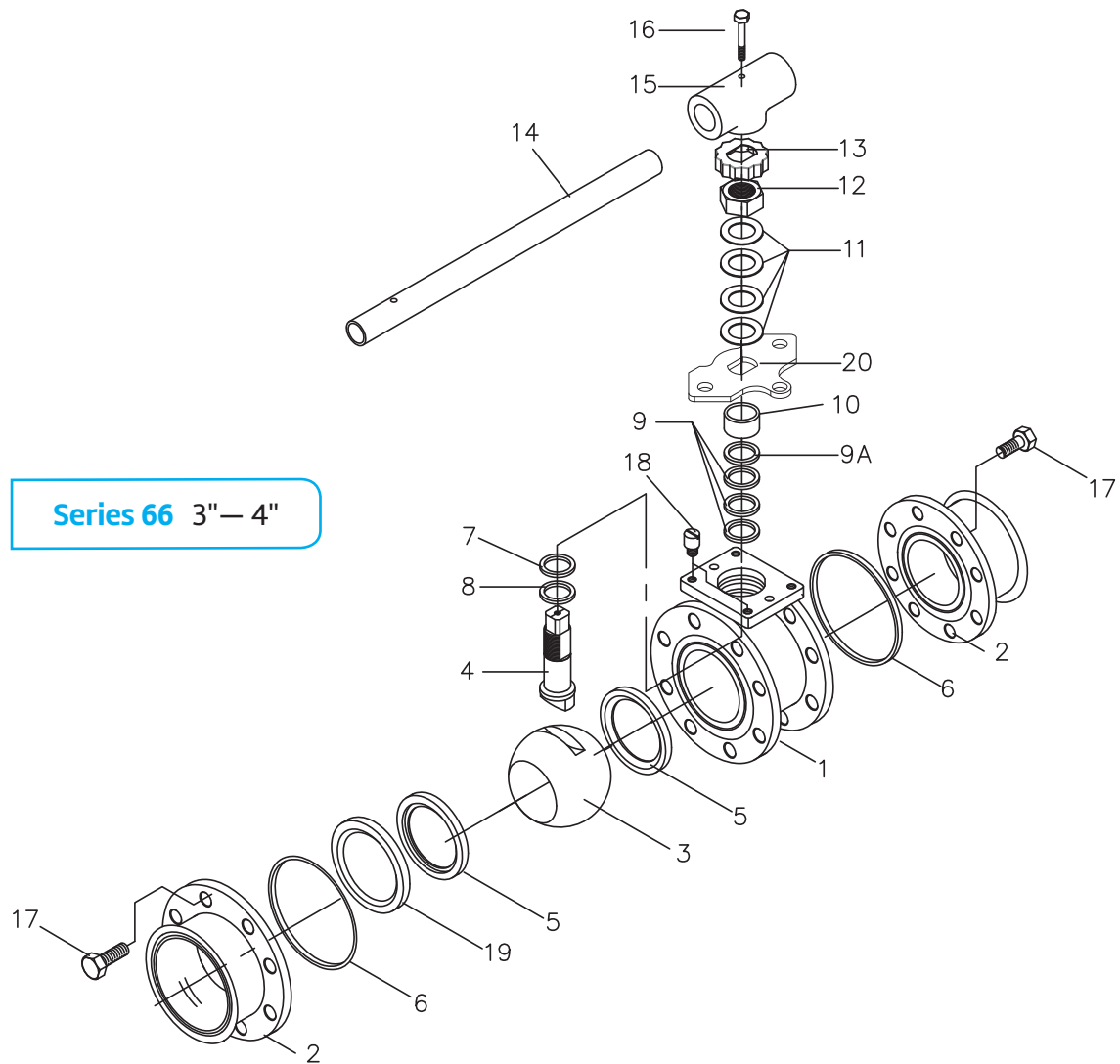
Parts and Materials (Sizes 1/2" – 2", 2 1/2")

No.	Part Name	Qty	Material
1	Body	1	316L Stainless Steel ASTM A351 CF3M
2	Pipe Ends	2	316L Stainless Steel ASTM A351 CF3M
3	Ball	1	316L Stainless Steel
4	Stem	1	316L Stainless Steel
5	Seat	2	TFM®, PTFE / RTFE / Cavity Filler PTFE
6	Body Seal	2/3	PTFE, TFM®
7	Thrust Bearing	1	TFM®
8	Thrust Bearing	1	TFM®
9	Stem Packing	3	TFM®
10	Seal Protector	1	TFM®
11	Gland	1	300 Series Stainless Steel
12	Belleville Washer	4	300 Series Stainless Steel
13	Packing Nut	1	300 Series Stainless Steel
14	Lock Tab	1	300 Series Stainless Steel
15	Lower Lock Hatch	1	300 Series Stainless Steel
15B	Upper Lock Hatch	1	300 Series Stainless Steel
15C	Latch Bolt	2	300 Series Stainless Steel
16	Handle	1	300 Series Stainless Steel
17	Lock Washer	1	300 Series Stainless Steel
18	Handle Nut (1/4"-2")	1	300 Series Stainless Steel
19	Body Bolts	4	304 Stainless Steel
20	Nuts	4	300 Series Stainless Steel
21	Stop Pin (1/2")*	1	300 Series Stainless Steel
		2	300 Series Stainless Steel

No.	Part Name	Qty	Material
1	Body	1	316L Stainless Steel ASTM A351 CF3M
2	Pipe Ends	2	316L Stainless Steel ASTM A351 CF3M
3	Ball	1	316L Stainless Steel
4	Seat	2	TFM®, PTFE / RTFE / Cavity Filler PTFE
5	Body Seal	2	PTFE, TFM®
6	Thrust Bearing	2	TFM®
7	Stem	1	316L Stainless Steel
8	Stem Seal	3	TFM®
9	Gland	1	300 Series Stainless Steel
10	Stopper	1	300 Series Stainless Steel
11	Belleville Washer	4	300 Series Stainless Steel
12	Packing Nut	1	300 Series Stainless Steel
13	Lock Tab	1	300 Series Stainless Steel
14	Wrench Block	1	300 Series Stainless Steel
15	Handle Bolt	1	300 Series Stainless Steel
16	Stop Pin	1	300 Series Stainless Steel
17	Body Bolts	4	304 Stainless Steel
18	Body Nuts	4	300 Series Stainless Steel
19	Handle	1	300 Series Stainless Steel
20	Gland Washer	1	300 Series Stainless Steel
21	Screw	2	304 Stainless Steel
22	Lower Stopper	1	316 Stainless Steel

High Purity Tube Three-Piece Ball Valve

Sharpe® Series 66



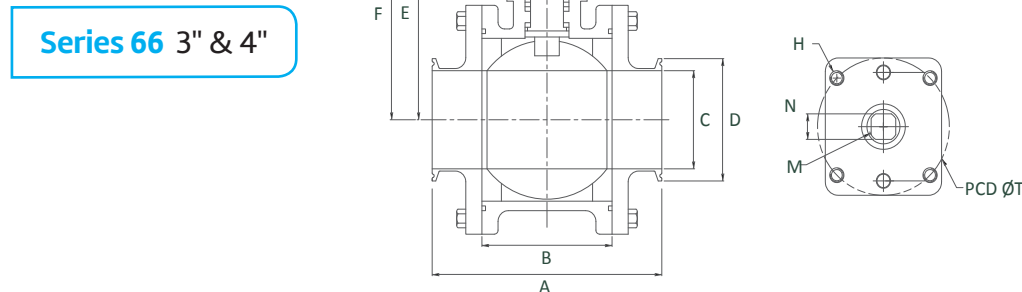
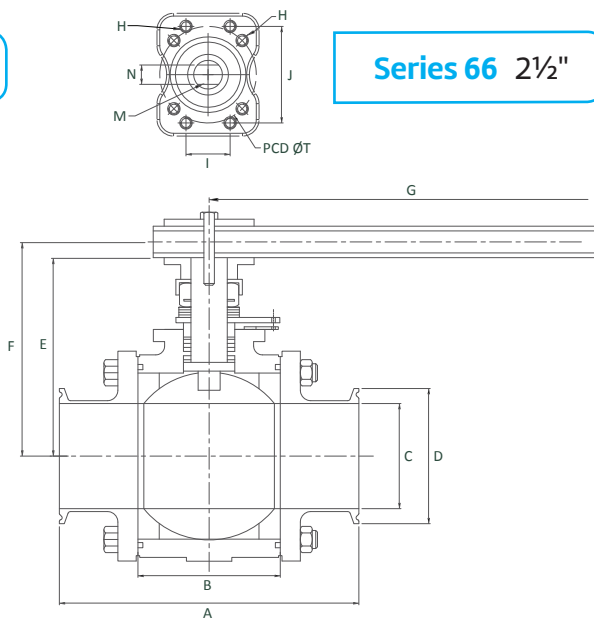
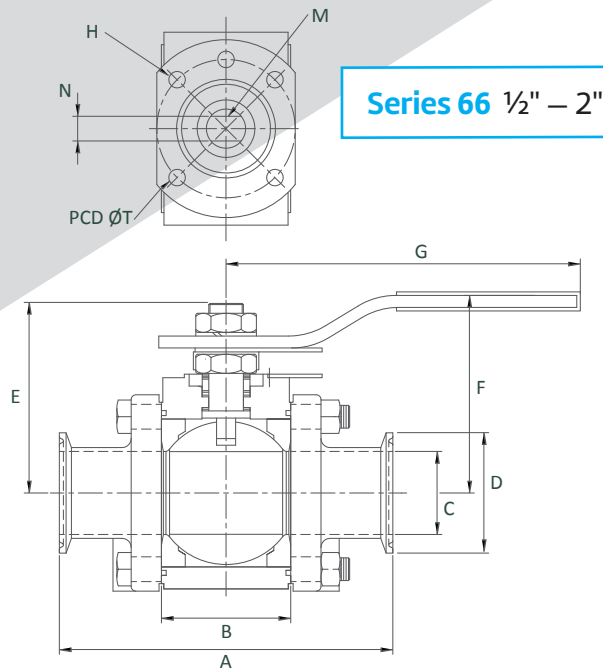
Parts and Materials (Sizes 3" – 4")

No.	Part Name	Qty	Materials
1	Body	1	316L Stainless Steel ASTM A351 CF3M
2	Pipe Ends	2	316L Stainless Steel ASTM A351 CF3M
3	Ball	1	316L Stainless Steel
4	Stem	1	316L Stainless Steel
5	Seat	2	TFM®, PTFE/RTFE/Cavity Filler PTFE
6	Body Seal	2	PTFE, TFM®
7	Thrust Bearing	1	TFM®
7A	Stem Location Ring	1	300 Series Stainless Steel
8	Thrust Bearing	1	TFM®
9	Stem Packing	3	TFM®
9A	Packing Protector	1	300 Series Stainless Steel

No.	Part Name	Qty	Materials
10	Gland	1	300 Series Stainless Steel
11	Belleville Washer	4	300 Series Stainless Steel
12	Packing Nut	1	300 Series Stainless Steel
13	Lock Tab	1	300 Series Stainless Steel
14	Handle	1	300 Series Stainless Steel
15	Wrench Block	1	300 Series Stainless Steel
16	Hex Head Bolt	1	300 Series Stainless Steel
17	Body Bolts	16	304 Stainless Steel
18	Stop Pin	1	300 Series Stainless Steel
19	Seat Retainer	1	300 Series Stainless Steel
20	Stopper	1	300 Series Stainless Steel

High Purity Tube Three-Piece Ball Valve

Sharpe® Series 66



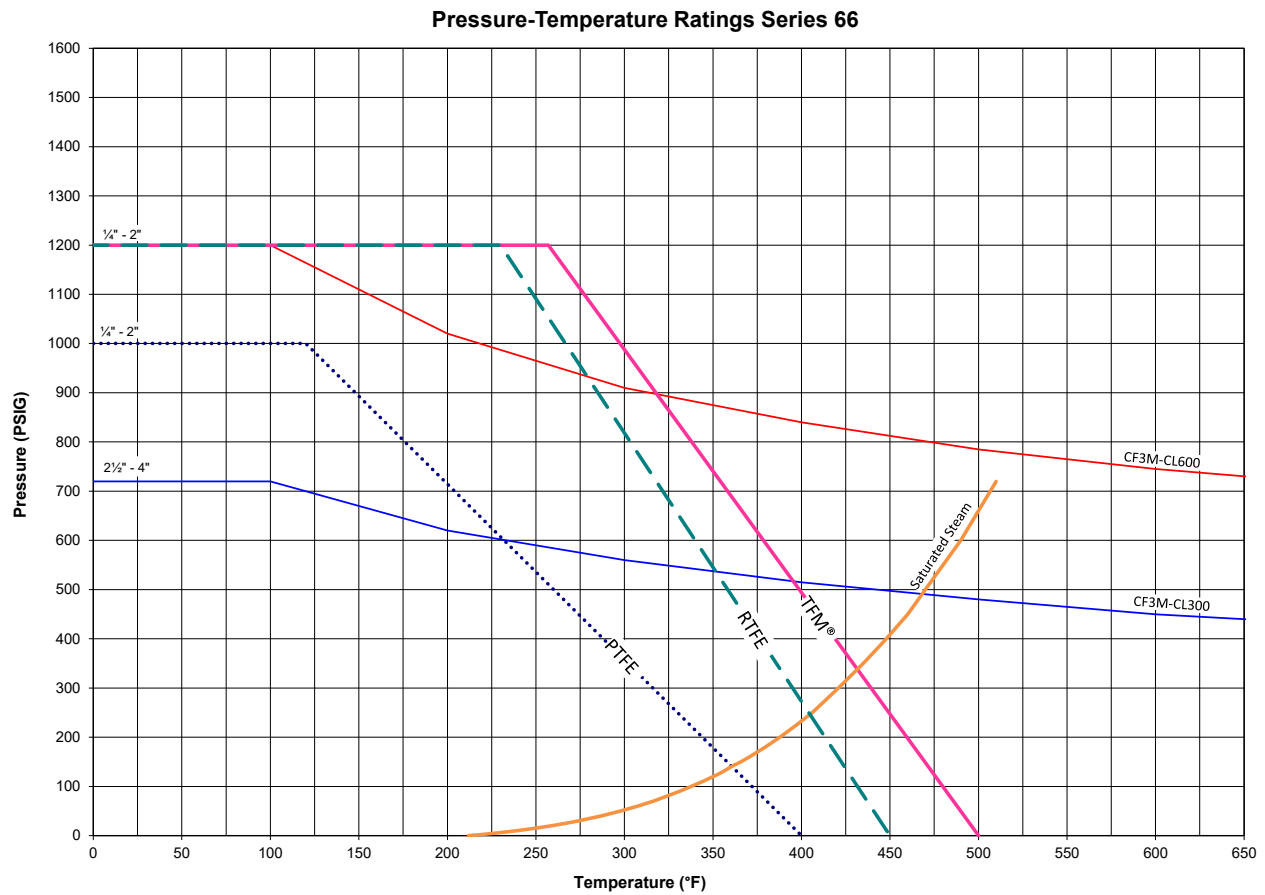
Dimensions (Sizes 1/2" – 2")

Size	A	B	C	D	E	F	G	H	T	N	M	I	J
1/2	3.50	0.97	0.37	0.98	1.64	2.23	4.50	M5	1.42	0.22	3/8 - 24	-	-
3/4	4.00	1.05	0.62	0.98	1.69	2.28	4.50	M5	1.42	0.22	3/8 - 24	-	-
1	4.50	1.54	0.87	1.98	2.36	2.84	5.79	M5	1.65	0.30	7/16 - 20	-	-
1-1/2	5.50	2.13	1.37	1.98	3.06	3.33	6.78	M6	1.97	0.35	9/16 - 18	-	-
2	6.25	2.66	1.87	2.52	3.43	3.68	6.78	M6	1.97	0.35	9/16 - 18	-	-
2-1/2	6.75	3.20	2.37	3.34	4.87	5.98	8.74	M8	2.76	0.55	M20 x P2.0	1.95	2.76
3	6.75	3.96	2.87	5.50	6.54	6.52	13.80	M10	4.02	0.75	1 - 14	-	-
4	8.25	4.73	3.83	6.97	7.13	7.05	13.80	M10	4.02	0.75	1 - 14	-	-

Note: The dimensions above are for informational purpose only. Please refer to Sharpe® Valves if you need dimensions for construction.

High Purity Tube Three-Piece Ball Valve

Sharpe® Series 66



Note: *Ratings are for the valve body, specific ends may cause the ratings to change.

Approximate Weight (Lbs.)

Size	Tri Clamp End	Extended Butt Weld End	Short Butt Weld
1/4"	1.50	1.40	1.40
3/8"	1.50	1.40	1.40
1/2"	1.50	1.40	1.40
3/4"	2.00	1.85	1.85
1"	3.90	3.60	3.60
1 1/4"	6.00	5.70	5.70
1 1/2"	7.50	7.30	7.30
2"	6.00	11.70	11.70
2 1/2"	7.50	20.00	20.00
3"	32.70	30.80	30.80
4"	47.50	45.00	45.00

Technical Information

Size	C _v
1/4"	1.5
3/8"	3.2
1/2"	8.1
3/4"	28.6
1"	67
1 1/4"	110
1 1/2"	192
2"	434
2 1/2"	779
3"	1123
4"	2054

High Purity Tube Three-Piece Ball Valve

Sharpe® Series 66



How to order Series 66

Fig:

2

-

66

-

6

-

6

-

R

-

T

-

CE

Size

Series

Body

Ball & Stem

Seat

Seal

Ends

Size	Series		Seat		Ends		Options	
½	66		R	RTFE	CE	Clamp 180 Grit	X	Oxygen Clean*
¾			T	PTFE	BE	Butt-weld Tube, Short 18-24 Ra (180 Grit)	SF	Silicone Free*
1	Body & Ends		M	TFM®	BTE	Butt-weld Tube, Extended 18-24 Ra (180 Grit)	OH	Oval Handle*
1½	6	316L Stainless Steel	C	Cavity Filler - PTFE				
2	Ball & Stem		Seal					
2½	6	316L Stainless Steel	T	PTFE				
3			M	TFM®				
4								

Note:

*POA

TFM® is a registered trademark of Dyleon, LLC.

Due to continuous development of our product range, we reserve the right to change the dimensions and information for this product as required.

About ASC Engineered Solutions

ASC Engineered Solutions is defined by quality—in its products, services and support. With more than 1,400 employees, the company's portfolio of precision-engineered piping support, valves and connections provides products to more than 4,000 customers across industries, such as mechanical, industrial, fire protection, oil and gas, and commercial and residential construction. Its portfolio of leading brands includes ABZ Valve®, AFCON®, Anvil®, Anvil EPS, Anvil Services, Basic-PSA, Beck®, Catawissa, Cooplet®, FlexHead®, FPPI®, Gruvlok®, J.B. Smith, Merit®, North Alabama Pipe, Quadrant®, SCI®, Sharpe®, SlideLOK®, SPF® and SprinkFLEX®. With headquarters in Commerce, CA, and Exeter, NH, ASC also has ISO 9001:2015 certified production facilities in PA, TN, IL, TX, AL, LA, KS, and RI.



asc-es.com

Building connections that last™

FC-DS-SERIES-66-v01 20210927

